

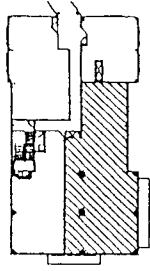
TITLE AMERICA

LOWRY TOWN CENTER  
LEVEL TWO

APPROXIMATELY 2,751 RSF  
NOT TO SCALE

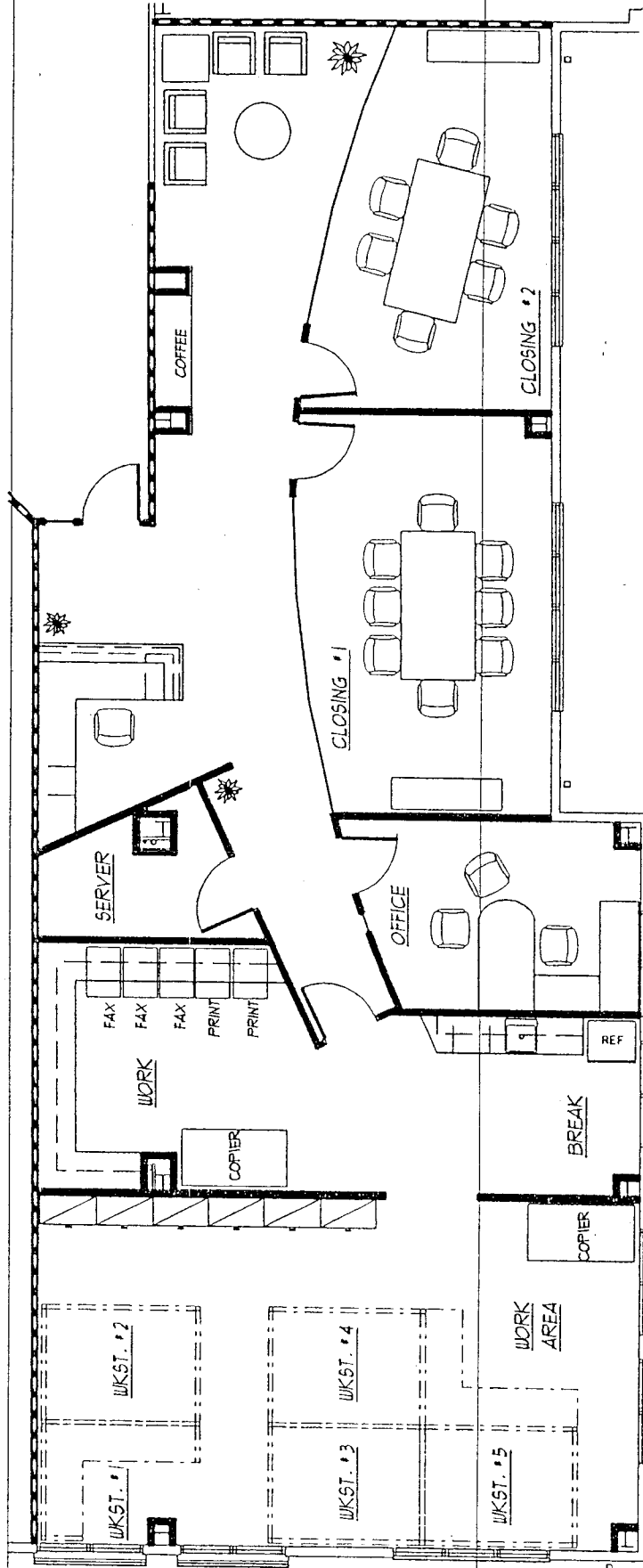
DATE: OCTOBER 14, 2003

REV. DATE: OCTOBER 15, 2003



KEY PLAN

EXHIBIT "A-1"



5

LOWRY TOWN CENTER  
DENVER, COLORADO

Landlord will provide only Tenant Improvements for interior Real Estate construction. Landlord will not be responsible for any furniture, fixtures or equipment within the premises.